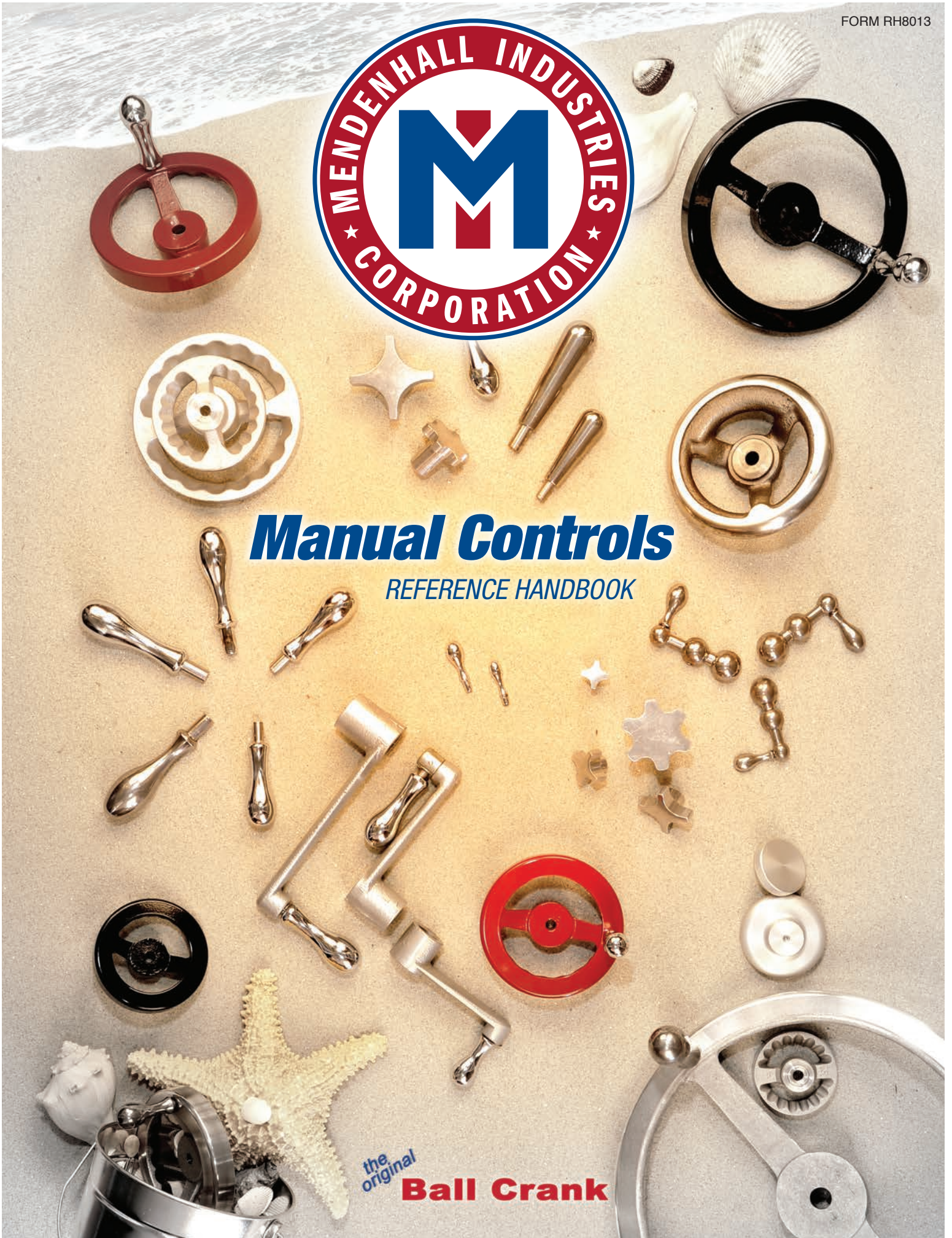




Manual Controls

REFERENCE HANDBOOK

the original **Ball Crank**





CONTENTS

The Ball Crank name began in Cincinnati, Ohio in 1906. For over 100 years, the name has been significant in the manufacture of Balanced Cranks, Machine Handles and Handwheels. Ball Crank Manual Control products have long been the high quality choice for the demanding builders of machine tools, valves, actuators, instruments and control systems.

Ball Crank Manual Control products reflect over a century of sensitivity to the needs of machine operators for comfort, safety and precise touch. With constant reviews and refined manufacturing and finishing processes to assure maximum quality and service.

Throughout the world, Ball Crank Manual Controls make recognized contributions to products in widely diverse industries. These range from machine tools to lift trucks and ovens. Ball Crank Controls are strong and reliable enough to be found in the most sensitive applications - medical and military - where precise machine response is imperative.

We invite your use of this handbook as your information and selection source for our full line of products. If you have unusual needs beyond our catalog product selections, please contact us. We will be pleased to respond to your custom design requirements.

Please Contact Customer Service at:
Mendenhall Industries
Customer Service:
(843) 293-0835

CRANKS	Balanced	3
	Forged	3
	Fold-A-Way	4
	Malleable	5
HANDLES	Solid	6
	Revolving	6
	Revolving Econ-O-Knob	7
	Fold-A-Way	7
HANDWHEELS	Disc-O-Matic	8
	Rec-O-Nized	9
	Econ-O-Lock	10
	Imperial	11
	Counter Balanced	12
	Clamping Levers	12
KNOBS	Fastrol	13
	Trutrol	14-15

★ Reference Handbook for the Design Engineer

☆ Specifications of Precision Engineered Manual Controls

★ Both Metric and Inch Dimensions

Made in America with American made materials and skilled American workmanship.

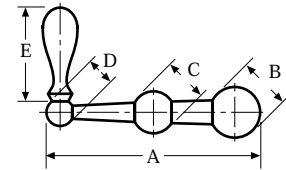


CRANKS



Balanced Cranks

- The original Ball Crank.
- With solid or revolving handle.
- Available chrome plated.
- MATERIAL: 12L14 steel bar stock; polished to a smooth high luster.



Part #s

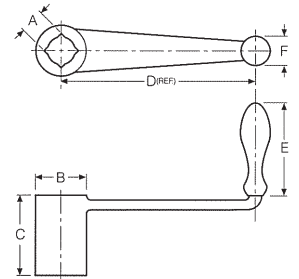
Dimensions in Inches (mm)

Solid	Revolving	A	B	C	D	Solid E	Revolving E
801023	-	3.0 (76)	1.00 (25)	.88 (22)	.63 (16)	1.47 (37)	-
801025	801042	3.5 (89)	1.13 (29)	1.00 (25)	.75 (19)	1.72 (44)	2.06 (52)
801027	801044	4.0 (102)	1.25 (32)	1.13 (29)	.81 (21)	2.00 (51)	2.06 (52)
801029	801046	4.5 (114)	1.38 (35)	1.25 (32)	.94 (24)	2.13 (54)	2.06 (52)
801031	801048	5.0 (127)	1.50 (38)	1.31 (33)	1.00 (25)	2.38 (60)	3.03 (77)
801032	801052	6.0 (152)	1.63 (41)	1.38 (35)	1.00 (25)	2.75 (70)	3.03 (77)
801035	801056	7.0 (178)	1.75 (44)	1.44 (37)	1.00 (25)	3.22 (82)	3.28 (83)

All center balls drilled with 1/4" pilot hole standard. Other pilot hole sizes available.

Forged Cranks

- Solid, one piece forged handle for severe usage.
- Body can be broached or furnished plain for custom fitting.
- MATERIAL: C1018 carbon steel.



Part #s

Dimensions in Inches (mm)

Unfinished	Broached	Finished	A	B	C	D	E	F
801072	801508	801510	.563 sq. (14.3)	1.25 (32)	1.38 (35)	4 (102)	3.13 (79)	1.00 (25)
801073	801512	801513	.625 sq. (15.9)	1.25 (32)	1.81 (46)	5 (127)	3.13 (79)	1.00 (25)
801075	801518	801519	.750 sq. (19.1)	1.38 (35)	2.06 (52)	7 (178)	3.38 (86)	1.13 (29)
801076	801521	801522	.875 sq. (22.3)	1.56 (40)	2.44 (62)	8 (203)	3.63 (92)	1.13 (29)

UNFINISHED - Plain, without hole in hub.

BROACHED - Same as finished without the enamel finish.

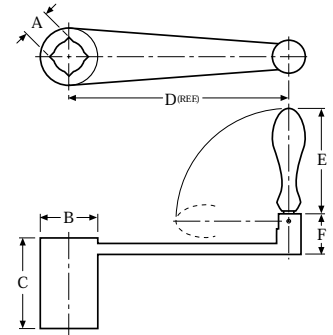
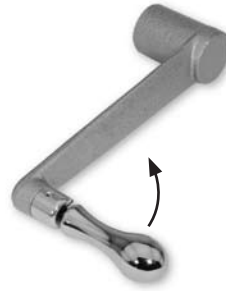
FINISHED - Broached, counter-bored in free end of hub. Broaching openings have corners slightly rounded to prevent breakage, with a slight clearance provided. Machine gray enamel finish.



CRANKS

Fold-A-Way™ Cranks

- Exceeds OSHA safety standards.
- Chrome plated revolving, retractive, safety handle.
- Body can be drilled, broached or furnished plain for custom fitting.
- MATERIAL: Cast ductile malleable iron crank.



Part #s

Dimensions in Inches (mm)

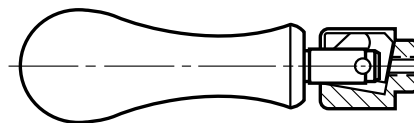
		A	B	C	D	E	F
Unfinished	818221	-	1.31 (33)	2.06 (52)	5 (127)	3.19 (81)	1.50 (38)
Unfinished	818222	-	1.31 (33)	2.19 (56)	6 (152)	3.19 (81)	1.50 (38)
Unfinished	818223	-	1.44 (37)	2.31 (59)	7 (178)	3.19 (81)	1.50 (38)
Finished	818224	.625 sq. (15.9)	1.31 (33)	1.81 (46)	5 (127)	3.19 (81)	1.50 (38)
Finished	818225	.688 sq. (17.5)	1.31 (33)	1.94 (49)	6 (152)	3.19 (81)	1.50 (38)
Finished	818226	.750 sq. (19.1)	1.44 (37)	2.06 (52)	7 (178)	3.19 (81)	1.50 (38)

Unfinished - Plain malleable crank with chrome plated revolving Fold-A-Way steel handle without hole in hub.

Finished - Broached, counter-bored in free end of hub. Crank has machine gray enamel finish. Chrome plated revolving steel Fold-A-Way safety handle. Broached openings have corners slightly rounded to prevent breakage, with a slight clearance provided.

Replacement Handle for Fold-A-Way™ Cranks

- MATERIAL: 12L14 steel bar stock; chrome plate



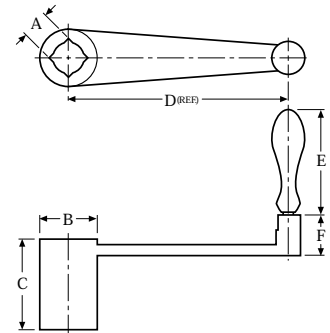
Part # 818220

CRANKS



Malleable Cranks

- For strength, ductility & shock resistance.
- Solid or revolving chrome plated handles.
- Body can be drilled, broached or furnished plain for custom fitting.
- MATERIAL: Cast ductile malleable iron crank.



Revolving Handle Part #s

Dimensions in Inches (mm)

		A	B	C	C	D	E	F
Unfinished	Finished			Unfinished	Finished			
801564	801572	.563 sq. (14.3)	1.31 (33)	1.63 (41)	1.38 (35)	4 (102)	2.06 (52)	.81 (21)
801565	801573	.625 sq. (15.9)	1.31 (33)	2.06 (52)	1.81 (46)	5 (127)	3.03 (77)	.94 (24)
801566	801574	.688 sq. (17.5)	1.31 (33)	2.19 (56)	1.94 (49)	6 (152)	3.03 (77)	.94 (24)
801567	801575	.750 sq. (19.1)	1.44 (37)	2.31 (59)	2.06 (52)	7 (178)	3.28 (82)	.94 (24)

Solid Handle Part #s

Dimensions in Inches (mm)

		A	B	C	C	D	E	F
Unfinished	Finished			Unfinished	Finished			
801560	801568	.563 sq. (14.3)	1.31 (33)	1.63 (41)	1.38 (35)	4 (102)	2.13 (54)	.81 (21)
801561	801569	.625 sq. (15.9)	1.31 (33)	2.06 (52)	1.81 (46)	5 (127)	2.38 (60)	.94 (24)
801562	801570	.688 sq. (17.5)	1.31 (33)	2.19 (56)	1.94 (49)	6 (152)	2.75 (70)	.94 (24)
801563	801571	.750 sq. (19.1)	1.44 (37)	2.31 (59)	2.06 (52)	7 (178)	3.22 (82)	.94 (24)

Unfinished - Plain malleable crank with chrome plated revolving handle without hole in hub.

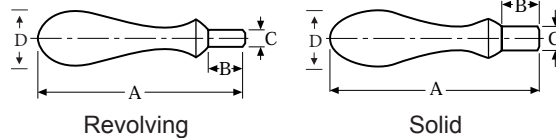
Finished - Broached, counter-bored in free end of hub. Crank has machine gray enamel finish. Chrome plated revolving steel handle. Broached openings have corners slightly rounded to prevent breakage, with a slight clearance provided.



HANDLES

Revolving & Solid Machine Handles

- Ergonomically shaped to fit the hand comfortably.
- Original Ball Crank design.
- Available with chrome plating.
- MATERIAL: 12L14 steel bar stock; polished to a smooth high luster.



Revolving Part #s

Dimensions in Inches (mm)

		A	B	C	D
Plain Finish	Chrome Plate				
801112	801113	1.91 (48)	.44 (11)	.2510 - .2520 (6.38 - 6.40)	.6250 (15.875)
801114	801115	2.63 (67)	.56 (14)	.3130 - .3140 (7.95 - 7.98)	.8750 (22.225)
801120	801121	3.78 (96)	.75 (19)	.3760 - .3770 (9.55 - 9.58)	1.1250 (28.575)
801123	801124	4.03 (102)	.75 (19)	.4385 - .4395 (11.12 - 11.15)	1.1875 (30.1663)
801129	801130	5.13 (130)	.94 (24)	.5010 - .5020 (12.73 - 12.75)	1.3750 (34.925)

Solid Part #s

Dimensions in Inches (mm)

		A	B	C	D
Plain Finish	Chrome Plate				
801401	801402	1.72 (44)	.44 (11)	.2510 - .2520 (6.38-6.40)	.4375 (11.30)
801404	801405	1.91 (48)	.44 (11)	.2510 - .2520 (6.38-6.40)	.6250 (15.875)
801408	801408c	2.16 (55)	.44 (11)	.3135 - .3145 (7.95-7.98)	.7500 (19.050)
801411	801412	2.44 (62)	.44 (11)	.3135 - .3145 (7.95-7.98)	.8125 (20.638)
801416	801417	2.69 (68)	.56 (14)	.3760 - .3770 (9.55-9.58)	.8750 (22.225)
801418	801419	3.06 (78)	.69 (17)	.4385 - .4395 (11.12-11.15)	1.000 (25.400)
801422	801423	3.44 (87)	.69 (17)	.4385 - .4395 (11.12-11.15)	1.1250 (28.575)
801427	801428	3.91 (99)	.69 (17)	.4385 - .4395 (11.12-11.15)	1.1875 (30.163)
801431	801433	4.25 (108)	.81 (21)	.4385 - .4395 (11.12-11.15)	1.1875 (30.163)
801436	801437	4.56 (116)	.94 (24)	.5010 - .5020 (12.73-12.75)	1.2500 (31.750)
801438	801438c	5.00 (127)	.94 (24)	.5010 - .5020 (12.73-12.75)	1.3750 (34.925)
801440	801440c	5.75 (146)	1.19 (30)	.6260 - .6270 (15.90-15.93)	1.5000 (38.100)

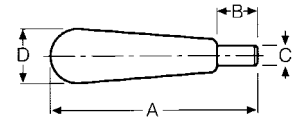
Special order: select stainless steel models.

HANDLES



Revolving Econ-O-Knob™ Handles

- APPLICATIONS: From machine tools to appliances.
- Unique conical shape, tapered handle.
- MATERIAL: 12L14 steel bar stock; polished to a smooth high luster.



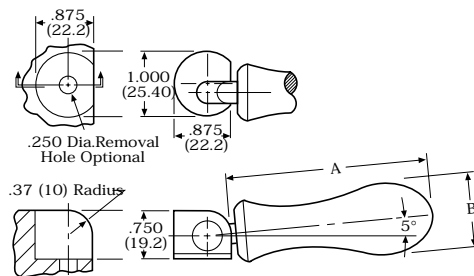
Part #s

Dimensions in Inches (mm)

		A	B	C	D
Plain Finish	Chrome Plate				
801542	801543	2.63 (67)	.56 (14)	.313 - .314 (7.95 - 7.98)	.750 (19)
801544	801545	3.78 (96)	.75 (19)	.376 - .377 (9.55 - 9.58)	1.000 (25)
801546	801547	5.13 (130)	.94 (24)	.501 - .502 (12.73 - 12.75)	1.250 (32)

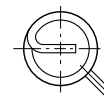
Fold Away Handle for Disc-O-Matic™ Handwheels

- MATERIAL: 6262-T-9 aluminum bar stock; polished to a smooth high luster.



Part #s Dimensions in Inches (mm)

	A	B
818017	1.56 (40)	.63 (16)
818027	2.13 (54)	.88 (22)
818037	3.06 (78)	1.13 (29)



Replacement Spring for
Handle 818008



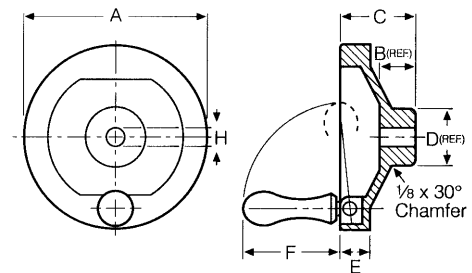
HANDWHEELS

Disc-O-Matic™ Handwheel

- Smooth, spokeless web with no hazardous openings.
- Finger-grip rim design for minimum slippage.
- Strong finish for good gripping surface & pleasant feel.
- Dished design for more distance between rim & possible machine cabinet pinch-points.
- Optional revolving aluminum handle folds away automatically when not in use.
- MATERIAL: Cast 319 aluminum; black powder coat finish.



A Handwheel that doesn't grab you!



Part #s

Dimensions in Inches (mm)

Without Handle	With Handle	A	B	C	D	E	F	H
818093	818123	4 (102)	.88 (22)	1.94 (49)	1.31 (33)	1.00 (25)	1.56 (40)	.375 (9.5)
818094	818124	5 (127)	1.00 (25)	2.13 (54)	1.50 (38)	1.00 (25)	2.13 (54)	.375 (9.5)
818095	818125	6 (152)	1.13 (29)	2.38 (60)	1.75 (44)	1.00 (25)	3.06 (78)	.500 (12.7)
818096	818126	7 (178)	1.25 (32)	2.50 (64)	1.75 (44)	1.00 (25)	3.06 (78)	.500 (12.7)
818097	818127	8 (203)	1.25 (32)	2.50 (64)	2.13 (54)	1.00 (25)	3.06 (78)	.625 (15.9)
818098	818128	10 (254)	1.38 (35)	3.00 (76)	2.50 (64)	1.13 (29)	3.06 (78)	.625 (15.9)
818099	818129	12 (305)	1.50 (38)	3.25 (83)	2.75 (70)	1.13 (29)	3.06 (78)	.750 (19.1)

Powder Coating also Available in Custom Colors.

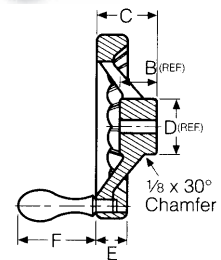
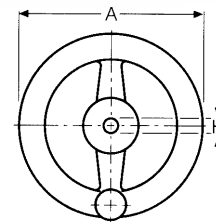
HANDWHEELS



Imperial Handwheel

*For
High Quality
and
True Economy*

- Cleaner - no black rub-off from aluminum or rust from cast iron.
- Diameters from 4" to 10", Light weight - low inertia.
- Finger-grip rim design minimizes hand-slipping.
- Available with or without a chrome plated steel revolving handle.
- MATERIAL: Cast 319 aluminum; black or red powder coat.



Part #s

Dimensions in Inches (mm)

Without Handle		With Handle		A	B	C	D	E	F	H
Red	Black	Red	Black							
818146	818148	818147	818149	4 (102)	.88 (22)	1.44 (37)	1.31 (33)	.75 (19)	2.06 (52)	.375 (9.5)
818156	818158	818157	818159	5 (127)	1.00 (25)	1.63 (41)	1.50 (38)	.81 (21)	2.06 (52)	.375 (9.5)
818166	818168	818167	818169	6 (152)	1.13 (29)	2.00 (51)	1.75 (44)	.88 (22)	3.03 (77)	.500 (12.7)
818176	818178	818177	818179	7 (178)	1.25 (32)	2.25 (57)	1.75 (44)	1.00 (25)	3.28 (83)	.500 (12.7)
818186	818188	818187	818189	8 (203)	1.25 (32)	2.38 (60)	2.13 (54)	1.00 (25)	3.28 (83)	.625 (15.9)
818196	818198	818197	818199	10 (254)	1.38 (35)	3.00 (76)	2.50 (64)	1.13 (29)	3.28 (83)	.625 (15.9)

Can be custom machined to meet unusual specifications or requirements.

Powder Coating also Available in Custom Colors.



HANDWHEELS

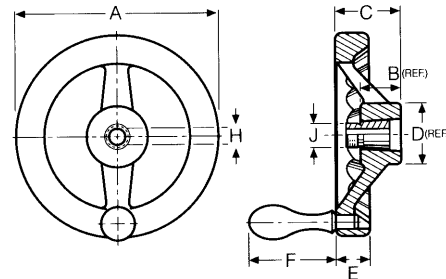
Rec-O-Nized™ Handwheel

- High quality, functionally engineered & competitively priced.
- Finger-grip rim design for minimum slippage.
- Available with solid or revolving handle, or without handles.
- MATERIAL: Cast 319 aluminum; polished



Can be custom machined to meet unusual specifications or requirements.

Special order only: Select stainless steel models.



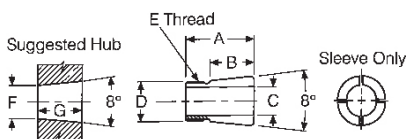
Part #s

Dimensions in Inches (mm)

Without Handle	Solid Handle	Revolving Handle	A	B	C	D	E	SOLID F	REVOLVING F	H
800002	800013	800030	3 (76)	.75 (19)	1.13 (29)	1.13 (29)	.63 (16)	1.47 (37)	1.38 (35)	.375 (9.5)
800004	800014	800033	4 (102)	.88 (22)	1.44 (37)	1.31 (33)	.75 (19)	2.00 (51)	2.06 (52)	.375 (9.5)
800005	800017	800036	5 (127)	1.00 (25)	1.63 (41)	1.50 (38)	.81 (21)	2.13 (54)	2.06 (52)	.375 (9.5)
800006	814214	814097	6 (152)	1.13 (29)	2.00 (51)	1.75 (44)	.88 (22)	2.75 (70)	3.03 (77)	.500 (12.7)
800007	800023	800046	7 (178)	1.25 (32)	2.25 (57)	1.75 (44)	1.00 (25)	3.22 (82)	3.28 (83)	.500 (12.7)
800008	800024	800050	8 (203)	1.25 (32)	2.38 (60)	2.13 (54)	1.00 (25)	3.22 (82)	3.28 (83)	.625 (15.9)
800009	800027	800053	10 (254)	1.38 (35)	3.00 (76)	2.50 (64)	1.13 (29)	3.44 (87)	3.28 (83)	.625 (15.9)
800011	800028	800057	12 (305)	1.50 (38)	3.25 (83)	2.75 (70)	1.13 (29)	4.06 (103)	4.13 (105)	.750 (19.1)
800012	-	814105	14 (356)	1.75 (44)	3.50 (89)	3.00 (76)	1.22 (31)	4.06 (103)	4.13 (105)	.750 (19.1)

Econo-Lock Sleeve (available separately)

- MATERIAL SPEC: 12L14 steel bar stock.



Part #s

Dimensions in Inches (mm)

	A	B	C	D	E	F	G
801665	1.062	.625	.378 - .376	.656 - .652	5/8 - 18	.626 - .630	.750
801666	1.375	.875	.503 - .501	.780 - .776	3/4 - 16	.751 - .755	1.000
801667	1.625	1.000	.628 - .626	.905 - .901	7/8 - 14	.876 - .880	1.125
801668	1.750	1.125	.751 - .753	1.030 - 1.026	1 - 14	1.001 - 1.005	1.250

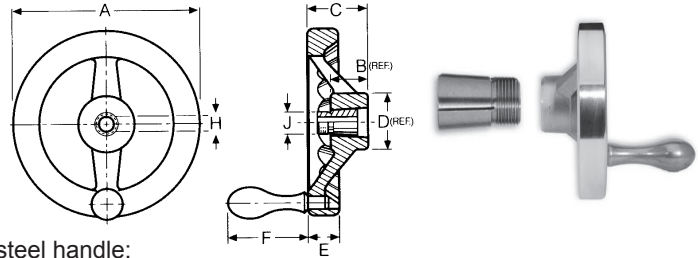


HANDWHEELS



Rec-O-Nized Handwheels with Econo-O-Lock™ Sleeve

- Provides the greatest holding power: four partial slots to thread relief.
- Assures concentricity, eliminates threading of shaft, keyways, set screws, cross holes, scoring of shafts & run out.
- Allows wider tolerances, self aligning & easy assembly.
- MATERIAL: Handwheel is Cast 319 aluminum, polished steel handle; Econo-O-Lock is 12L14 steel bar stock.



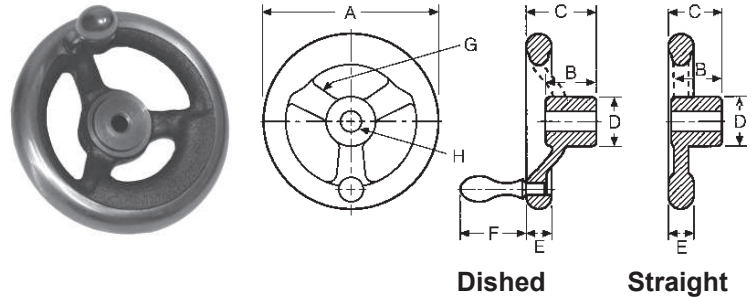
Without Handle	A	B	C	D	E	F	H	Thread J
800059	3 (76)	.69 (17)	1.13 (29)	1.13 (29)	.63 (16)		.375 (9.5)	5/8 - 18
800060	4 (102)	.81 (21)	1.44 (37)	1.31 (33)	.75 (19)		.375 (9.5)	5/8 - 18
800061	5 (127)	.94 (24)	1.56 (40)	1.50 (38)	.81 (21)		.375 (9.5)	5/8 - 18
800063	6 (152)	1.03 (26)	1.91 (48)	1.75 (44)	.88 (22)		.500 (12.7)	3/4 - 16
800065	7 (178)	1.16 (29)	2.16 (55)	1.75 (44)	1.00 (25)		.500 (12.7)	3/4 - 16
800066	8 (203)	1.16 (29)	2.28 (58)	2.13 (54)	1.00 (25)		.625 (15.9)	7/8 - 14
800067	10 (254)	1.28 (33)	2.91 (74)	2.50 (64)	1.13 (29)		.625 (15.9)	7/8 - 14
800069	12 (305)	1.41 (36)	3.16 (80)	2.75 (70)	1.13 (29)		.750 (19.1)	1 - 14
Solid Handle	A	B	C	D	E	F	H	Thread J
800072	3 (76)	.69 (17)	1.13 (29)	1.13 (29)	.63 (16)	1.47 (37)	.375 (9.5)	5/8 - 18
814108	4 (102)	.81 (21)	1.44 (37)	1.31 (33)	.75 (19)	2.00 (51)	.375 (9.5)	5/8 - 18
814110	5 (127)	.94 (24)	1.56 (40)	1.50 (38)	.81 (21)	2.13 (54)	.375 (9.5)	5/8 - 18
800073	6 (152)	1.03 (26)	1.91 (48)	1.75 (44)	.88 (22)	2.75 (70)	.500 (12.7)	3/4 - 16
800074	7 (178)	1.16 (29)	2.16 (55)	1.75 (44)	1.00 (25)	3.22 (82)	.500 (12.7)	3/4 - 16
800075	8 (203)	1.16 (29)	2.28 (58)	2.13 (54)	1.00 (25)	3.22 (82)	.625 (15.9)	7/8 - 14
800076	10 (254)	1.28 (33)	2.91 (74)	2.50 (64)	1.13 (29)	3.44 (87)	.625 (15.9)	7/8 - 14
800077	12 (305)	1.41 (36)	3.16 (80)	2.75 (70)	1.13 (29)	4.06 (103)	.750 (19.1)	1 - 14
Revolving Handle	A	B	C	D	E	F	H	Thread J
800079	3 (76)	.69 (17)	1.13 (29)	1.13 (29)	.63 (16)	1.38 (35)	.375 (9.5)	5/8 - 18
800081	4 (102)	.81 (21)	1.44 (37)	1.31 (33)	.75 (19)	2.06 (52)	.375 (9.5)	5/8 - 18
800082	5 (127)	.94 (24)	1.56 (40)	1.50 (38)	.81 (21)	2.06 (52)	.375 (9.5)	5/8 - 18
800084	6 (152)	1.03 (26)	1.91 (48)	1.75 (44)	.88 (22)	3.03 (77)	.500 (12.7)	3/4 - 16
800086	7 (178)	1.16 (29)	2.16 (55)	1.75 (44)	1.00 (25)	3.28 (83)	.500 (12.7)	3/4 - 16
800088	8 (203)	1.16 (29)	2.28 (58)	2.13 (54)	1.00 (25)	3.28 (83)	.625 (15.9)	7/8 - 14
800089	10 (254)	1.28 (33)	2.91 (74)	2.50 (64)	1.13 (29)	3.28 (83)	.625 (15.9)	7/8 - 14
800090	12 (305)	1.41 (36)	3.16 (80)	2.75 (70)	1.13 (29)	4.13 (105)	.750 (19.1)	1 - 14



HANDWHEELS

Counter-Balanced Handwheel

- World famous Ball Crank Counter-Balanced Handwheel.
- Available with solid or revolving chrome plated handles.
- Blank castings also available.
- MATERIAL: Cast iron; rim polished to high luster.



Dished

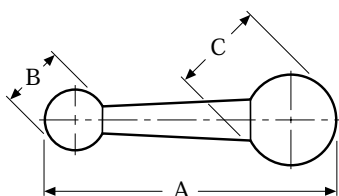
No Handle	Solid Handle	Revolving Handle	A	B	C	D	E	SOLID F	REVOLVING F	SPOKES G	H
801168	801212	801239	4 (102)	1.00 (25)	1.50 (38)	1.00 (25)	.75 (19)	2.00 (51)	2.06 (52)	3	.375 (9.5)
801172	801216	801241	5 (127)	1.13 (29)	1.63 (41)	1.25 (32)	.75 (19)	2.13 (54)	2.06 (52)	3	.375 (9.5)
801177	801218	801243	6 (152)	1.25 (32)	2.00 (51)	1.50 (38)	.88 (22)	2.75 (70)	3.03 (77)	3	.500 (12.7)
801181	801220	801245	7 (178)	1.50 (38)	2.25 (57)	1.50 (38)	1.00 (25)	3.22 (82)	3.28 (83)	3	.500 (12.7)
801185	801222	801247	8 (203)	1.50 (38)	2.38 (60)	1.75 (44)	1.00 (25)	3.22 (82)	3.28 (83)	3	.625 (15.9)
801190	801225	801249	9 (229)	2.13 (54)	3.00 (76)	2.00 (51)	1.13 (29)	3.44 (87)	3.28 (83)	3	.625 (15.9)
801194	801227	801251	10 (203)	2.13 (54)	3.00 (76)	2.25 (57)	1.13 (29)	3.44 (87)	3.28 (83)	6	.625 (15.9)
801198	801228	801253	12 (305)	2.25 (57)	3.25 (83)	2.50 (64)	1.13 (29)	4.06 (103)	4.13 (105)	6	.750 (19.1)

Straight Style

No Handle	A	B	C	D	E	G (spokes)	H
801149	6 (102)	1.25 (32)	1.31 (33)	1.50 (38)	.875 (22)	3	.500 (12.7)
801155	8 (203)	1.50 (38)	1.56 (40)	1.75 (44)	1.00 (25)	3	.625 (15.9)
801159	10 (203)	2.00 (51)	2.06 (52)	2.25 (57)	1.13 (29)	6	.625 (15.9)
801164	12 (203)	2.25 (57)	2.31 (59)	2.50 (64)	1.13 (29)	6	.750 (19.1)

Clamping Levers

- MATERIAL: 12L14 steel bar stock, polished to high luster.
- Chrome Plating Available.



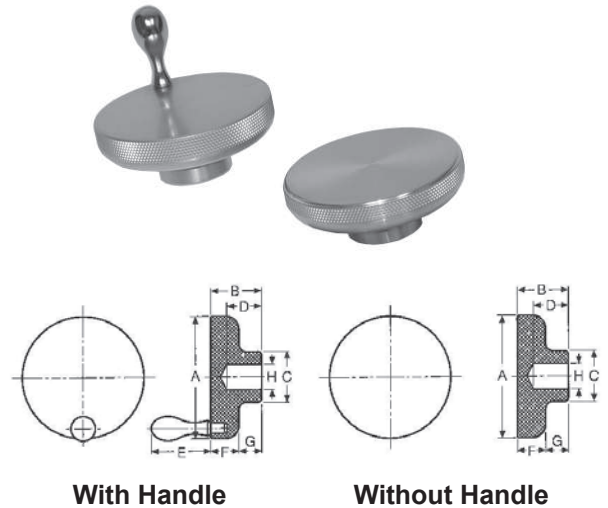
Part #s	Dimensions in Inches (mm)		
	A	B	C
801349	3.0 (76)	.63 (16)	1.00 (25)
801355	3.5 (89)	.75 (16)	1.00 (25)
801385	6.5 (165)	1.00 (25)	1.75 (44)

KNOBBS



Fastrol™ Knobs

- An outstanding knob used wherever high quality knobs are required.
- With knurled rims for better gripping action.
- Available as blanks or with reamed hole.
- Handles (when specified) machined from solid bar steel and chrome plated.
- Solid knobs have centered pilot hole for easy centering.
- MATERIAL: Aluminum - 6062-T9 bar stock; polished & clear anodized.



Aluminum Part #s

Dimensions in Inches (mm)

Without Handle	With Handle	A	B	C	D	E	F	G	H
801454	-	1 (25)	.81 (21)	.50 (13)	.63 (16)	-	.38 (10)	.44 (11)	.250 (6.4)
801457	-	1 (25)	.81 (21)	.50 (13)	.63 (16)	-	.38 (10)	.44 (11)	-
801460	801476	2 (51)	1.13 (29)	.81 (21)	.88 (22)	1.28 (33)	.56 (14)	.56 (14)	.375 (9.6)
801464	801478	2 (51)	1.13 (29)	.81 (21)	.88 (22)	1.28 (33)	.56 (14)	.56 (14)	-
801468	801480	3 (76)	1.25 (32)	1.25 (32)	.88 (22)	1.47 (37)	.69 (17)	.56 (14)	.625 (15.9)
801471	801482	3 (76)	1.25 (32)	1.25 (32)	.88 (22)	1.47 (37)	.69 (17)	.56 (14)	-

Special Order: Select stainless steel models.

Special Precision Engraving Available

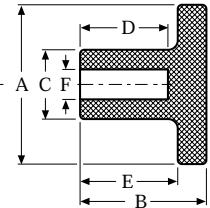
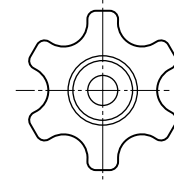




KNOBS

Extruded Aluminum Trutrol™ Knobs

- Highlights quality on your products.
- Precision aluminum extrusions.
- Sturdy & lightweight.
- Excellent gripping action.
- MATERIAL: 6061-T6 aluminum extrusion; polished.



Hexagon Knobs

Part #s

Dimensions in Inches (mm)

	A	B	C	D	E	F
818040	2.00 (51)	1.63 (41)	.88 (22)	-	1.25 (32)	
818041	2.00 (51)	1.63 (41)	.88 (22)	1.13 (29)	1.25 (32)	3/8 - 16
818042	2.00 (51)	1.63 (41)	.88 (22)	1.13 (29)	1.25 (32)	.375 (9.5)
818060	2.50 (64)	1.88 (48)	1.00 (25)	-	1.44 (37)	
818061	2.50 (64)	1.88 (48)	1.00 (25)	1.13 (29)	1.44 (37)	1/2 - 13
818062	2.50 (64)	1.88 (48)	1.00 (25)	1.13 (29)	1.44 (37)	.500 (12.7)
818070	3.00 (76)	2.00 (51)	1.25 (32)	-	1.50 (38)	
818072	3.00 (76)	2.00 (51)	1.25 (32)	1.13 (29)	1.50 (38)	.625 (15.9)
818073	3.00 (76)	2.00 (51)	1.25 (32)	1.13 (29)	1.50 (38)	3/4 - 10
818074	3.00 (76)	2.00 (51)	1.25 (32)	1.13 (29)	1.50 (38)	.750 (19.1)

Bottom end of knobs faced square with tapped or reamed hole.

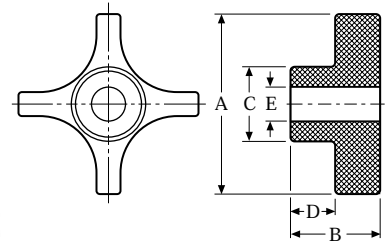
Plain knobs are centered and faced square.

KNOBS



Extruded Aluminum Trutrol™ Knobs

- Dress up your equipment.
- Precision aluminum extrusions.
- Sturdy & lightweight.
- Excellent gripping action.
- MATERIAL: 6061-T6 aluminum extrusion; polished.



Star Knobs

Part #s

Dimensions in Inches (mm)

	A	B	C	D	E
818080	1.00 (25)	.88 (22)	.50 (12)	.50 (12)	-
818081	1.00 (25)	.88 (22)	.50 (12)	.50 (12)	1/4 - 20
818082	1.00 (25)	.88 (22)	.50 (12)	.50 (12)	.250 (6.4)
818090	1.50 (38)	.88 (22)	.63 (16)	.38 (10)	-
818091	1.50 (38)	.88 (22)	.63 (16)	.38 (10)	5/16 - 18
818092	1.50 (38)	.88 (22)	.63 (16)	.38 (10)	.313 (7.9)
818100	2.00 (51)	1.00 (25)	.81 (21)	.50 (12)	-
818101	2.00 (51)	1.00 (25)	.81 (21)	.50 (12)	3/8-16
818110	2.50 (64)	1.13 (29)	1.00 (25)	.56 (14)	-
818111	2.50 (64)	1.13 (29)	1.00 (25)	.56 (14)	1/2-13
818112	2.50 (64)	1.13 (29)	1.00 (25)	.56 (14)	.500 (12.7)
818120	3.00 (76)	1.25 (32)	1.25 (32)	.63 (16)	-
818121	3.00 (76)	1.25 (32)	1.25 (32)	.63 (16)	5/8-11
818122	3.00 (76)	1.25 (32)	1.25 (32)	.63 (16)	.625 (15.9)

Bottom end of knobs faced square with tapped or reamed hole.

Plain knobs are centered and faced square.

DISC-O-MATIC™

ECON-O-LOCK™

ECON-O-NOB™

FOLD-A-WAY™

FASTROL™

HYDRO-ACT™

REC-O-NIZED™

TRUTROL™

MADE IN

U. S. A.



MENDENHALL
INDUSTRIES

4773 Northgate Blvd.
Myrtle Beach, SC 29577

PH: 843-293-0835
FX: 843-293-0851

www.mendenhallindustries.com

